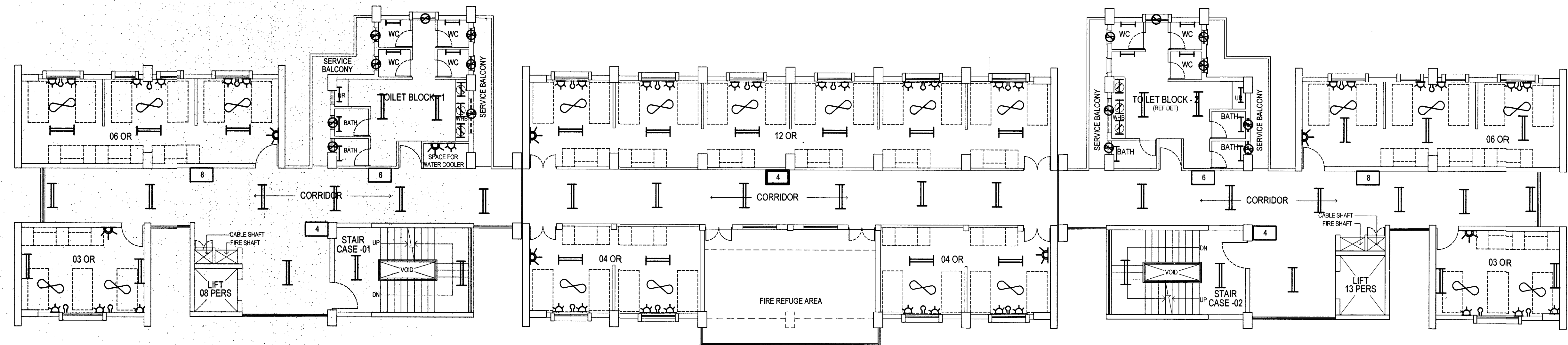


INTERNAL ELECTRIFICATION PLAN OF NINTH FLOOR  
SCALE - 1:100



INTERNAL ELECTRIFICATION PLAN OF EIGHTH FLOOR  
SCALE - 1:100

NOTES	
1	CONTRACTOR TO CHECK AND VERIFY ALL THE DIMENSIONS BEFORE EXECUTION OF THE WORK.
2	FIGURED DIMENSIONS SHALL BE FOLLOWED.
3	ALL DIMENSIONS ARE GIVEN IN MILLIMETERS UNLESS OTHERWISE SPECIFIED.
4	FOR LIST OF DRAWINGS, REFER DRG NO CEVZ/2022/ LD - 2.110 SHEET NO. 1/11
5	THE LOCATIONS OF THE EM FITTINGS MARKED ARE TENTATIVE, THE SAME MAY BE VARIED AS PER SITE REQUIREMENT DURING EXECUTION.

LEGEND		
SL NO	DESCRIPTION	SHOWN THUS
1	CEILING FAN	
2	CALLING BELL	
3	10 W LED TUBE LIGHT	
4	20 W LED TUBE LIGHT	
5	5 AMP SWITCH SOCKET (INDEPENDENT)	
6	LED BUILDING SECURITY LIGHT	
7	15 AMP SWITCH SOCKET (COMBINATION)	
8	LED BULB WITH HOLDER	
9	5 AMP SWITCH SOCKET (SAME BOARD)	
10	TPN DB 4 WAY	
11	SPN 8 WAY DB	
12	SPN 6WAY DB	
13	SPN 12WAY DB	
14	LED MIRROR LIGHT FITTING	
15	EXHAUST FAN	
16	SPN 4 WAY DB	

SL NO	DATE	DESCRIPTION	INITIAL
REVISIONS			
PROVISION OF DEFICIENT 287 SINGLE INLVING ACCN ASSOCIATED FACILITIES FOR DSC AT NAVAL DOCKYARD, VISAKHAPATNAM (BD NO AMWP 46/2020)			
INTERNAL ELECTRIFICATION PLANS OF EIGHT AND NINTH FLOORS			
DATE	11-06-2022	CHIEF ENGINEER (NAVY) VISAKHAPATNAM ZONE	SHEET NO  22/24
DRN	NK VIKRAM		
TCD	---		
CKD			
SCALE	1:100	DRG. NO. CEVZ/2022/WD/2110 (SA-CH/DH)	

KSV

AAD (ARCH)

AAD (UTILITY)

OFFG DIRECTOR (UTILITY)  
FOR CHIEF ENGINEER